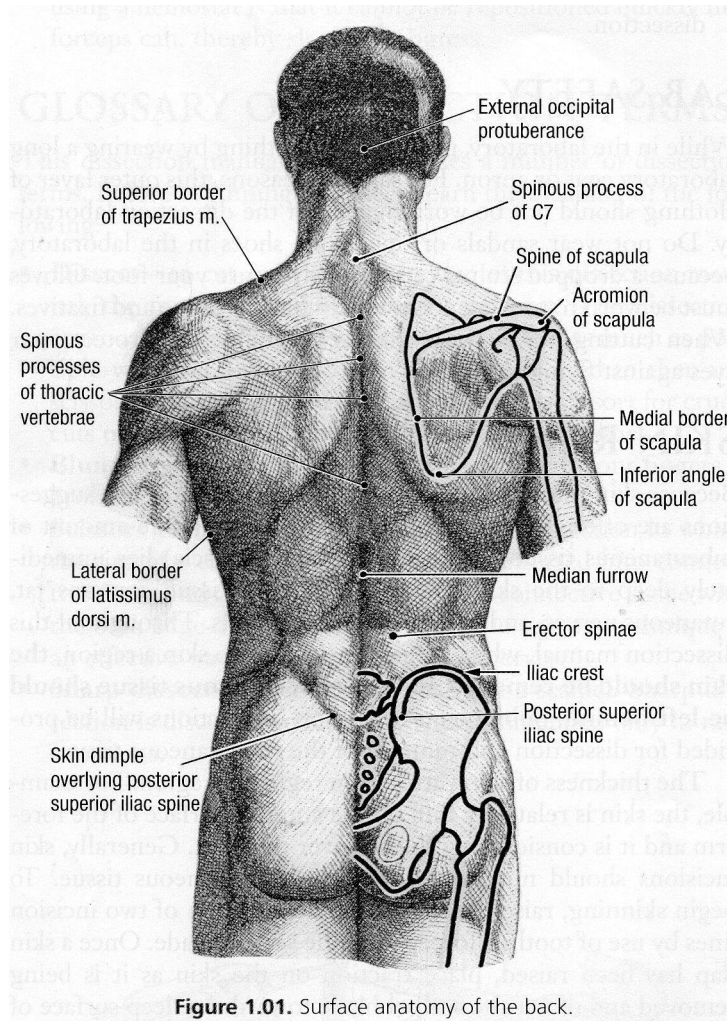


Surface Anatomy and Boundaries



Skeleton of the Back - Overview

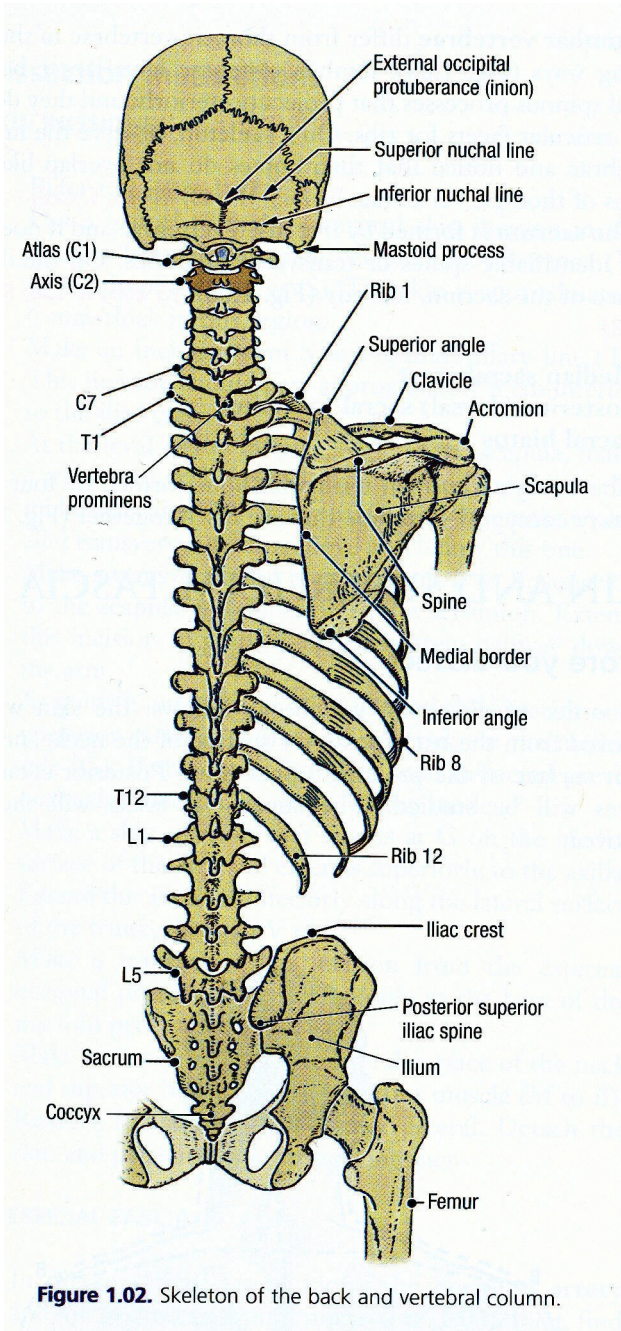


Figure 1.02. Skeleton of the back and vertebral column.

Typical Spinal Nerve

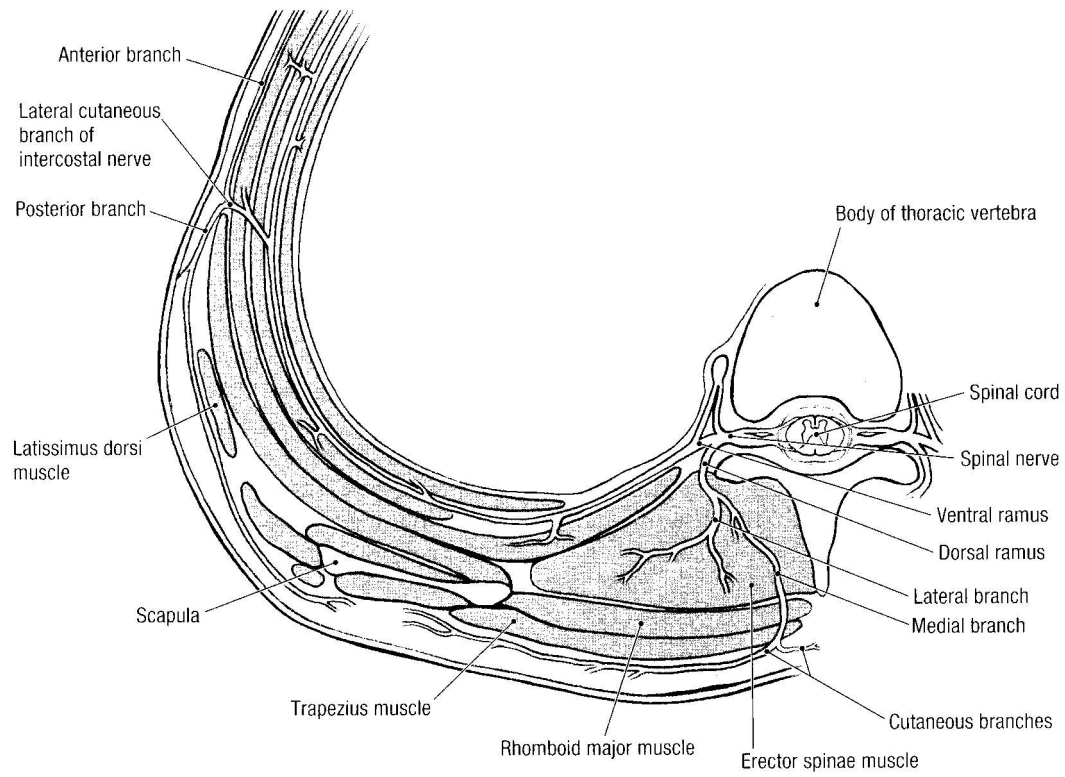
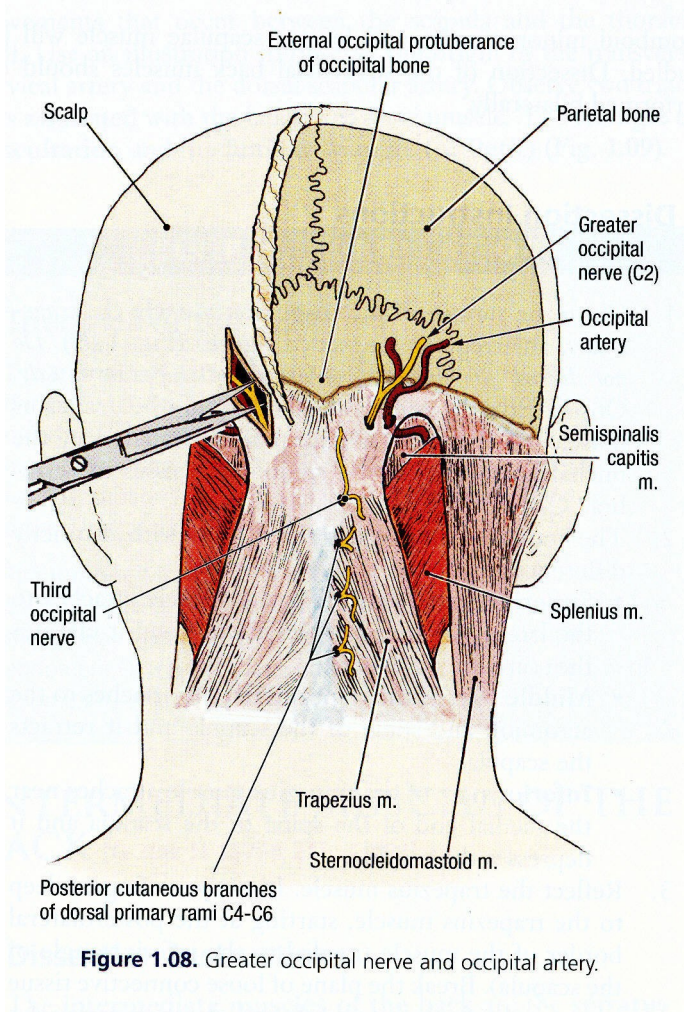
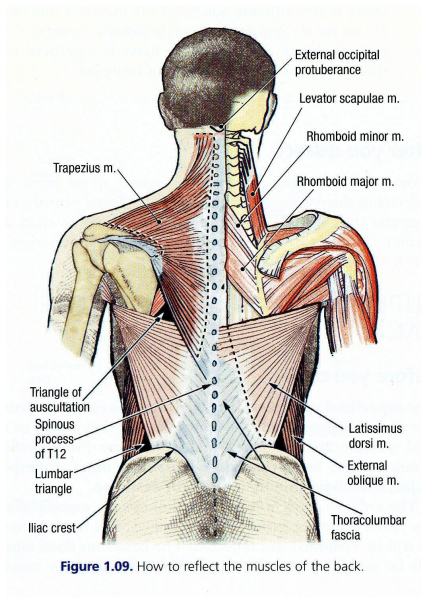


Figure 1.9. Branches of a typical spinal nerve.

Greater Occipital Nerve and Artery



Superficial Muscles of the Back – Trapezius and Latissimus Dorsi



Rotation of the Scapula

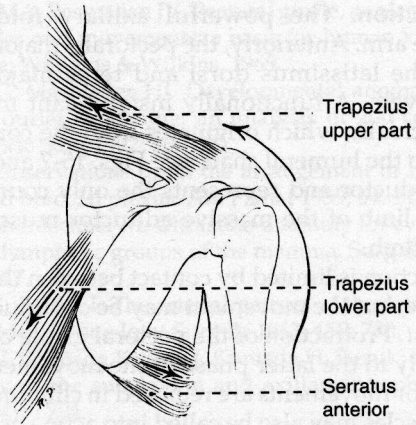
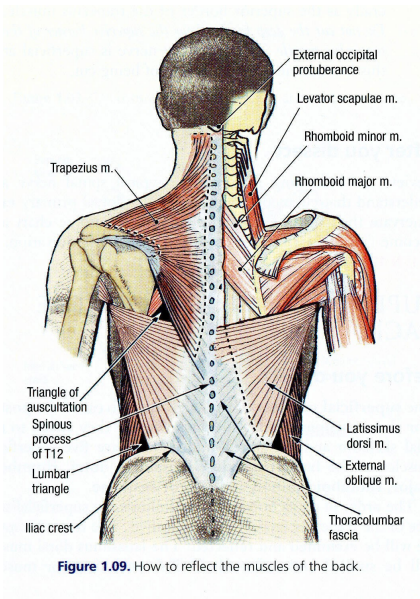
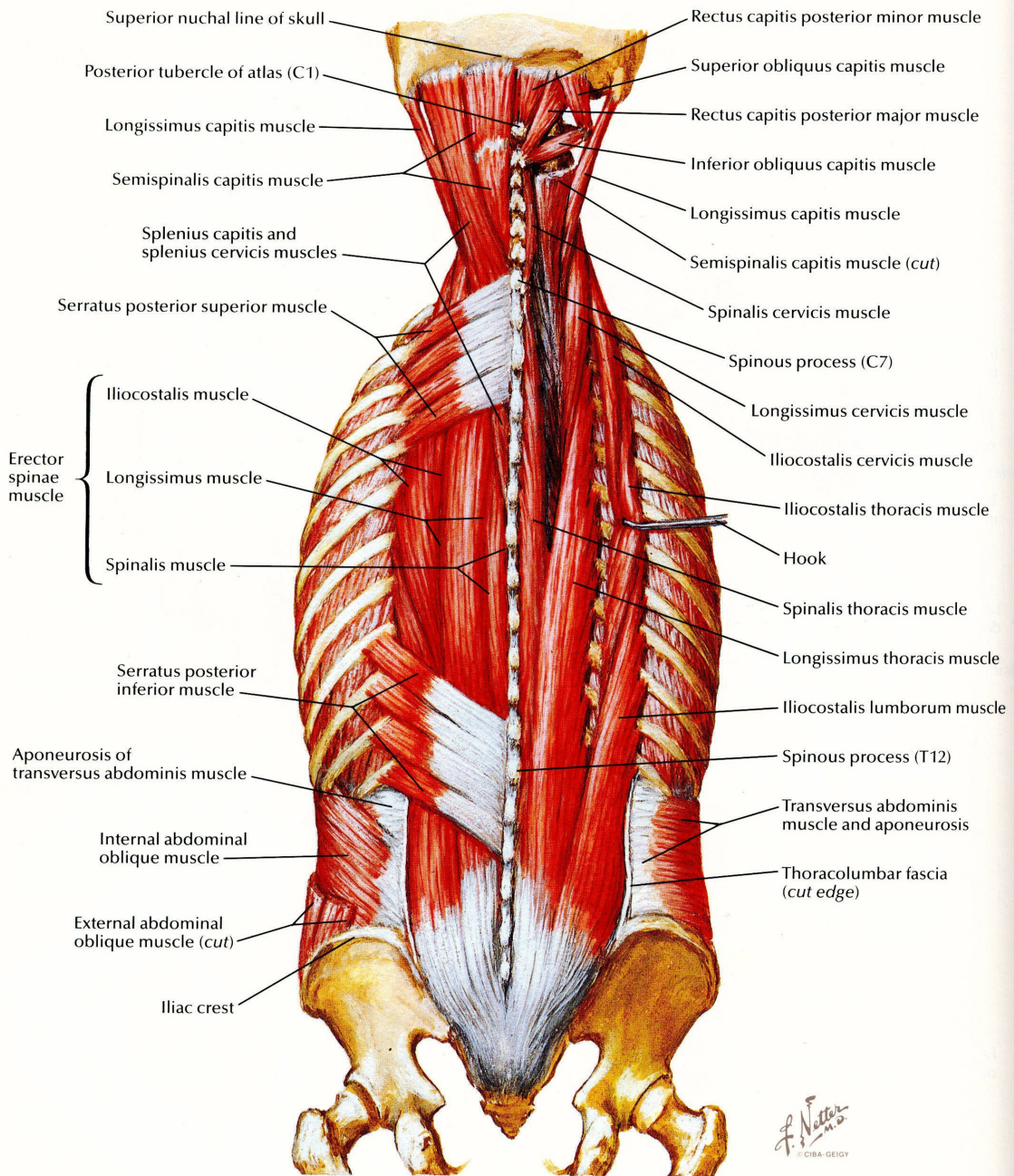


FIGURE 15-36.
The muscles that rotate the scapula upward during abduction of the arm.

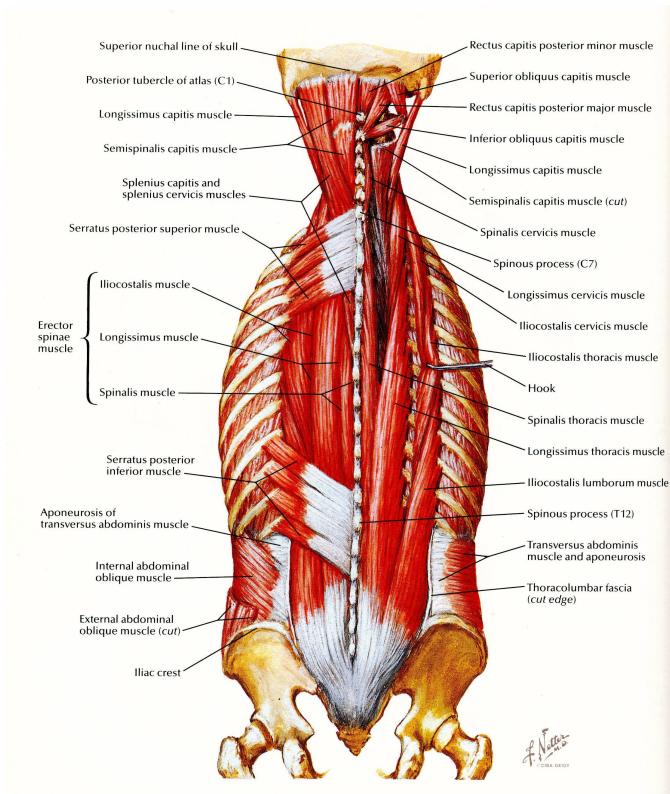
Superficial Muscles of the Back – Rhomboids and Levator Scapulae



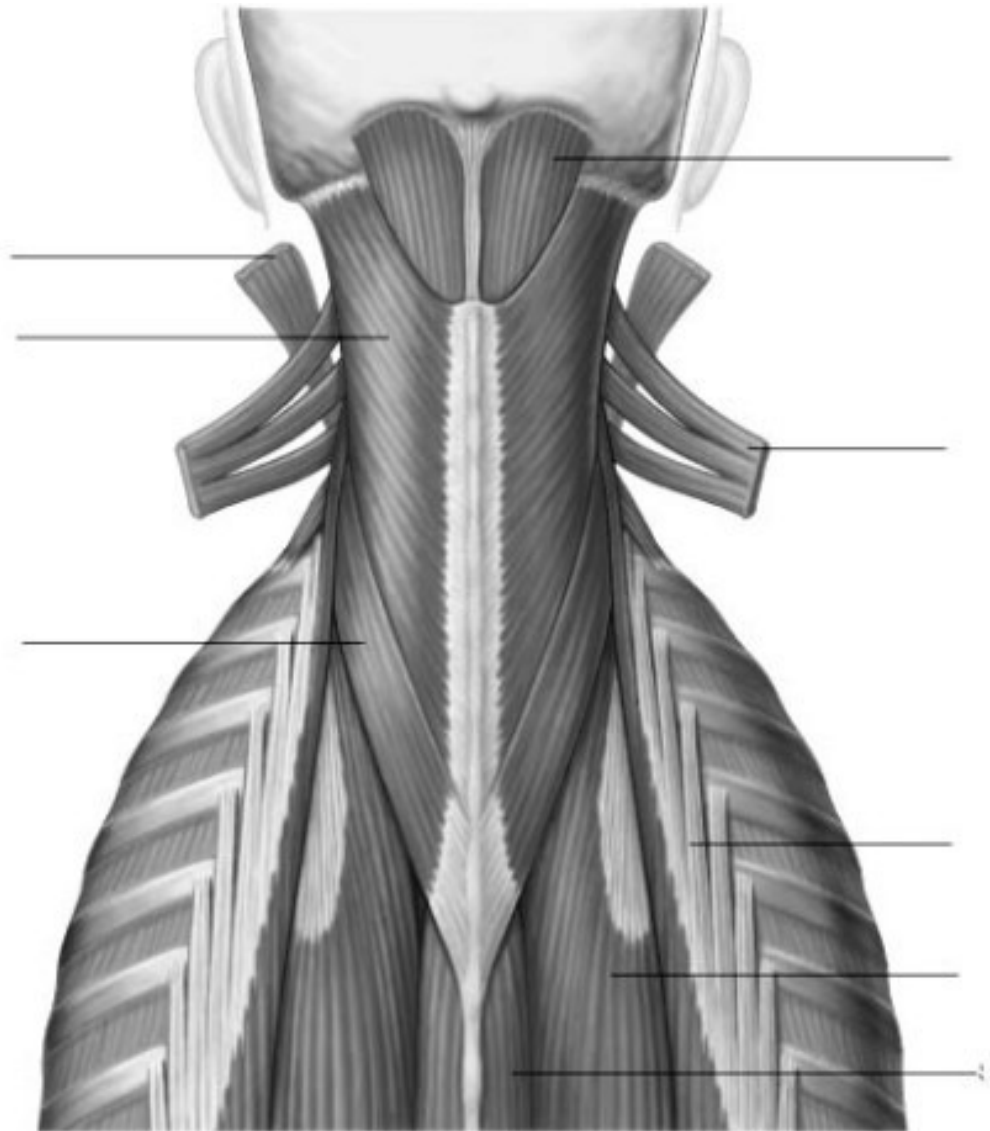
Intermediate and Deep Muscles of the Back – Serratus Posterior Superior and Serratus Posterior Inferior



Deep Muscles of the Back – Cervical Region

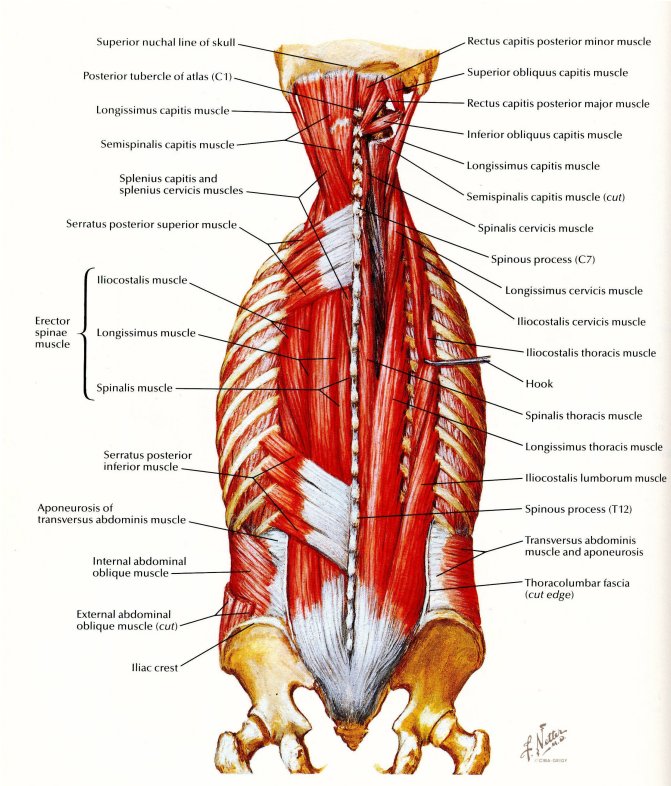


Deep Muscles of the Back – Cervical Region



© Elsevier Ltd 2005. Standing: Gray's Anatomy 39e

Deep Muscles of the Back – Thoracic Region



Deep Muscles of the Back – Transversospinal Group

