

Craniovertebral Joints and Prevertebral Region - Laboratory Identifications

Identifications for Craniovertebral Joints

1. Anterior arch of the atlas
2. Posterior arch of the atlas
3. Superior articular facet of atlas (atlanto-occipital joint articulation)
4. Facet for dens of the atlas (atlanto-axial joint articulation)
5. Anterior and posterior synovial cavities of atlanto-axial joint
6. Transverse ligament of atlas - prevents posterior displacement of dens, horizontal component of cruciate ligament
7. Alar ligaments - from dens to margin of foramen magnum, limits rotation
8. Tectorial membrane - superior extension of posterior longitudinal ligamen
9. Superior and Inferior longitudinal ligaments - verticle component of cruciate ligament

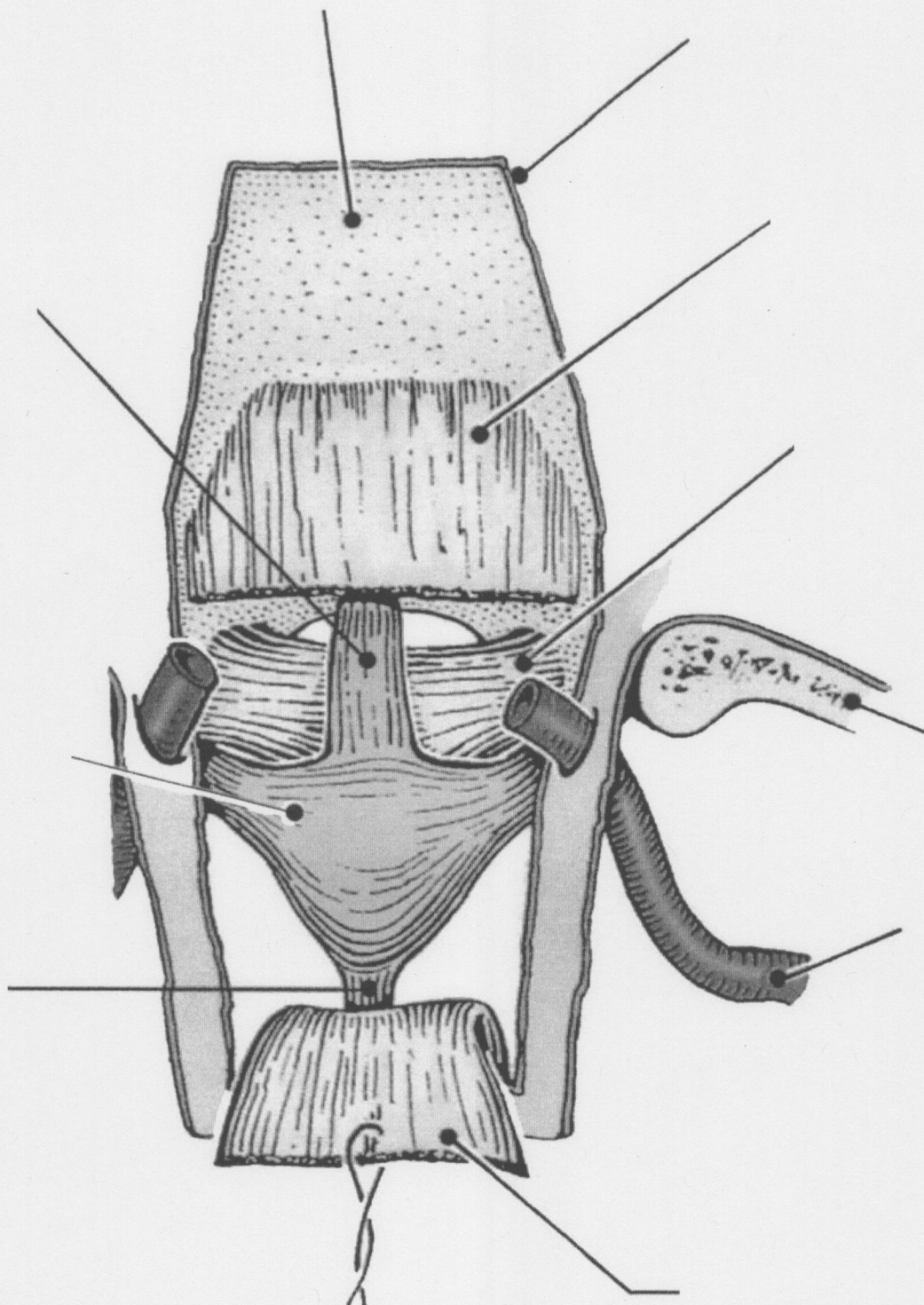
Identifications for Prevertebral Region

1. Digastric groove
2. Styloid process
3. Styломastoid foramen
4. Facial nerve
5. Jugular foramen
6. Internal jugular vein
7. Glossopharyngeal nerve
8. Vagus nerve
9. Spinal accessory nerve
10. Hypoglossal nerve
11. Longus colli muscle
12. Longus capitus muscle
13. Subclavian artery
14. Common carotid artery
15. Vertebral artery
16. Transverse foramen of atlas
17. Thyrocervical trunk
18. Inferior thyroid artery
19. Ascending cervical artery
20. Transverse cervical artery
21. Suprascapular artery
22. Thoracic sympathetic trunk
23. Stellate ganglion
24. Vertebral cervical sympathetic ganglion
25. Middle cervical sympathetic trunk ganglion
26. Superior cervical sympathetic trunk ganglion
27. Internal carotid artery
28. Internal carotid nerve and plexus
29. Ansa subclavia

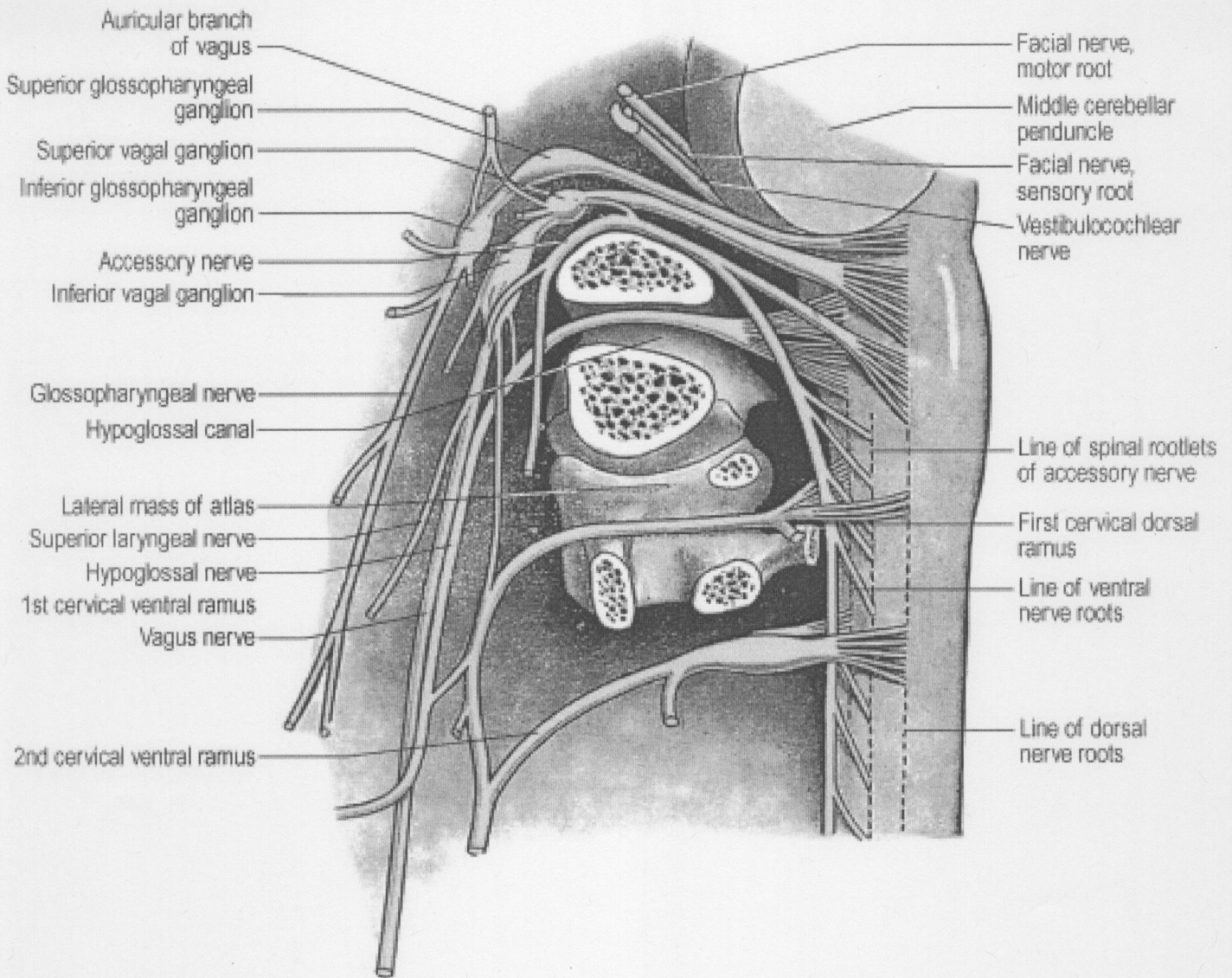
[Top](#)

Comments

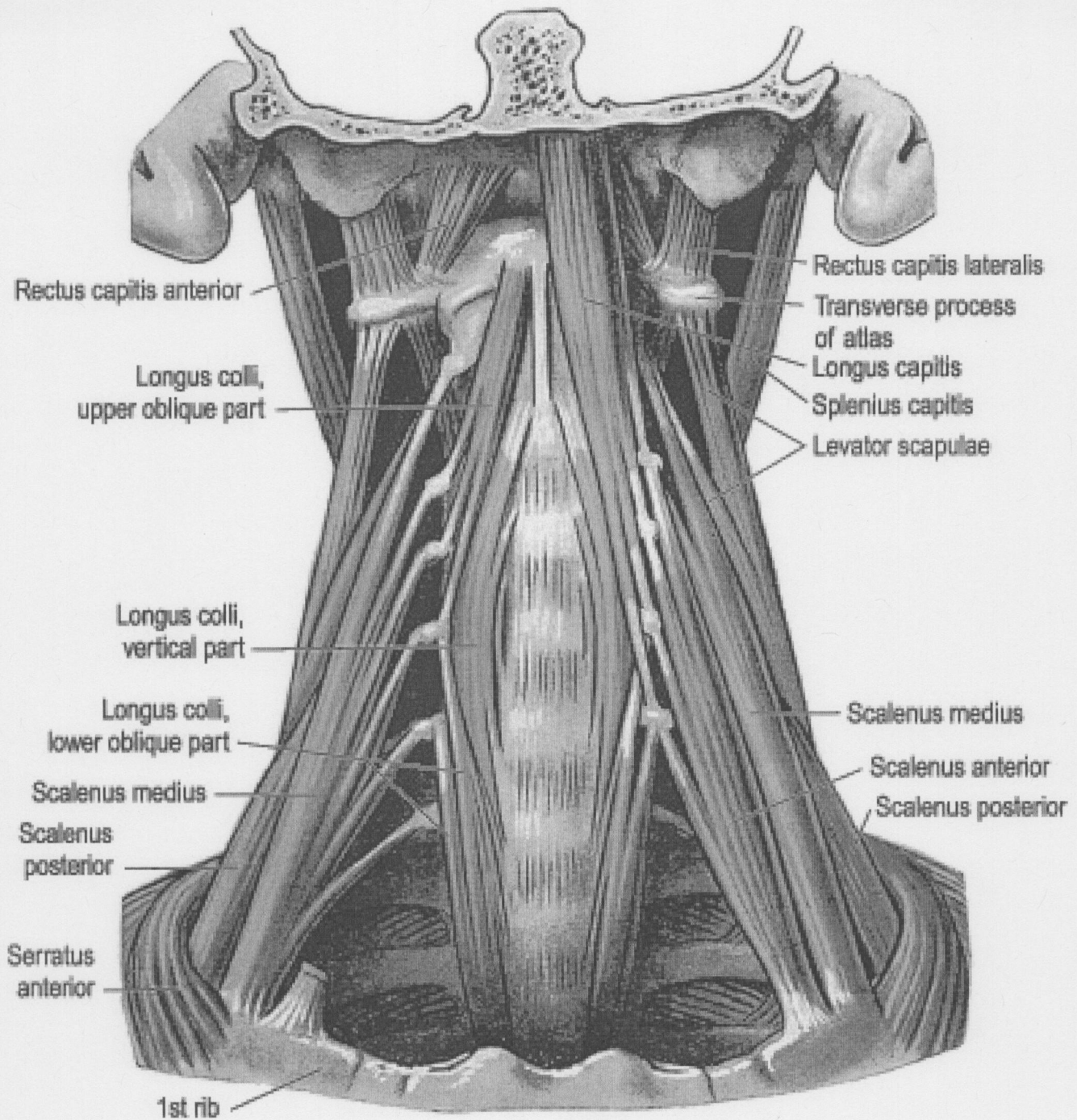
Ligaments of the Craniovertebral Joints



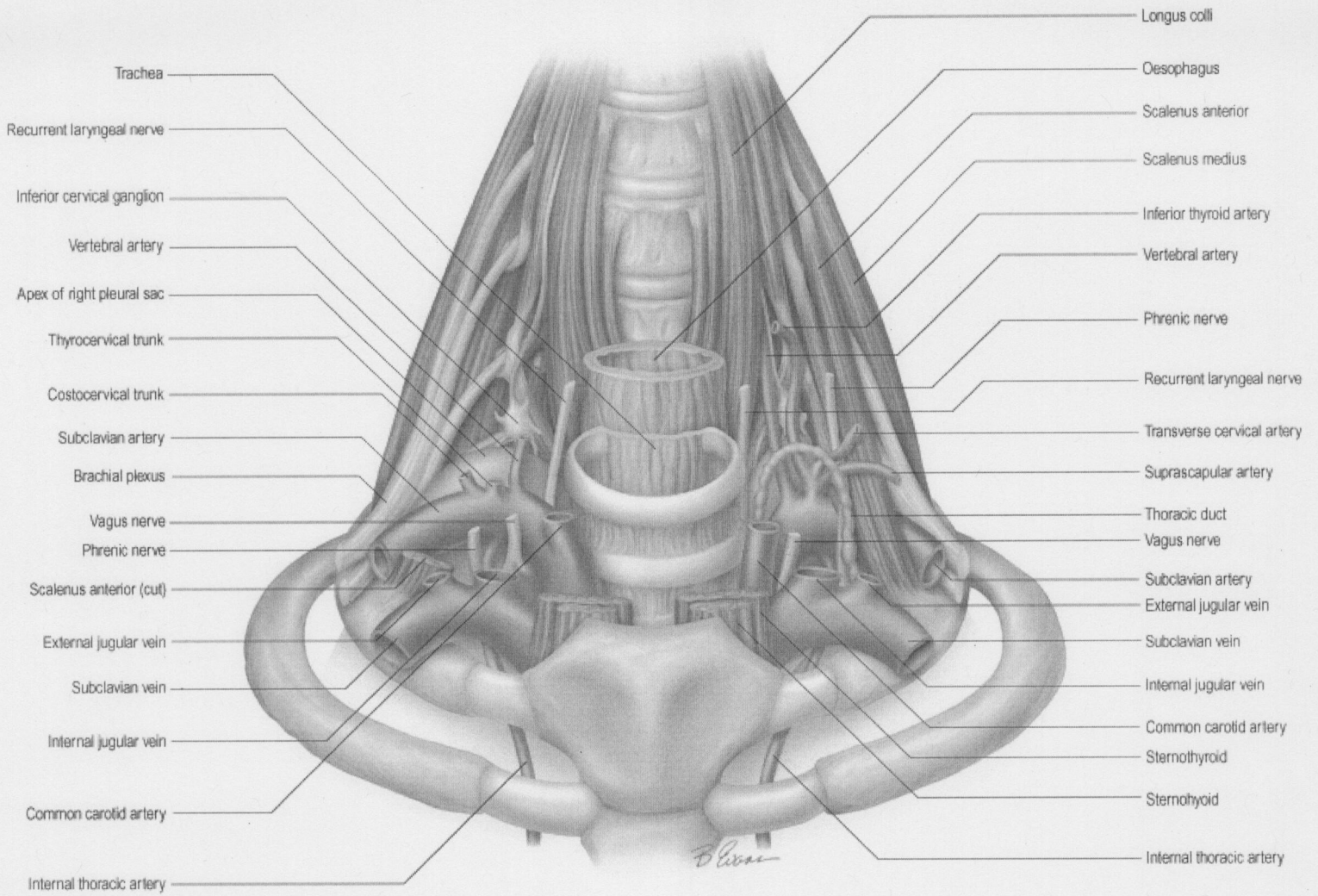
Gray's 31.23. Jugular Foramen and Hypoglossal Canal



Gray's 31.9. Prevertebral Region - Muscles

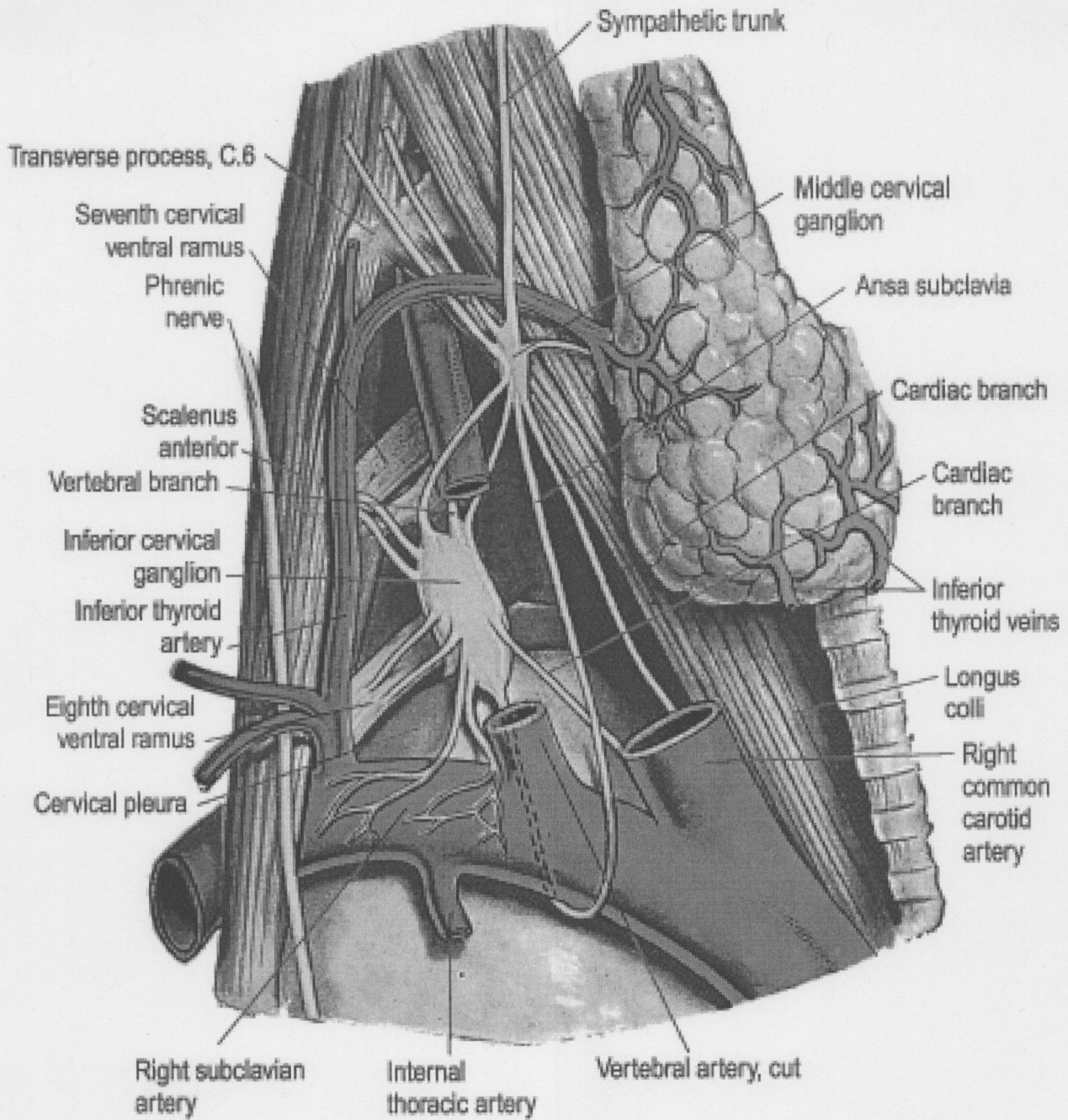


Gray's 31.9. Root of Neck

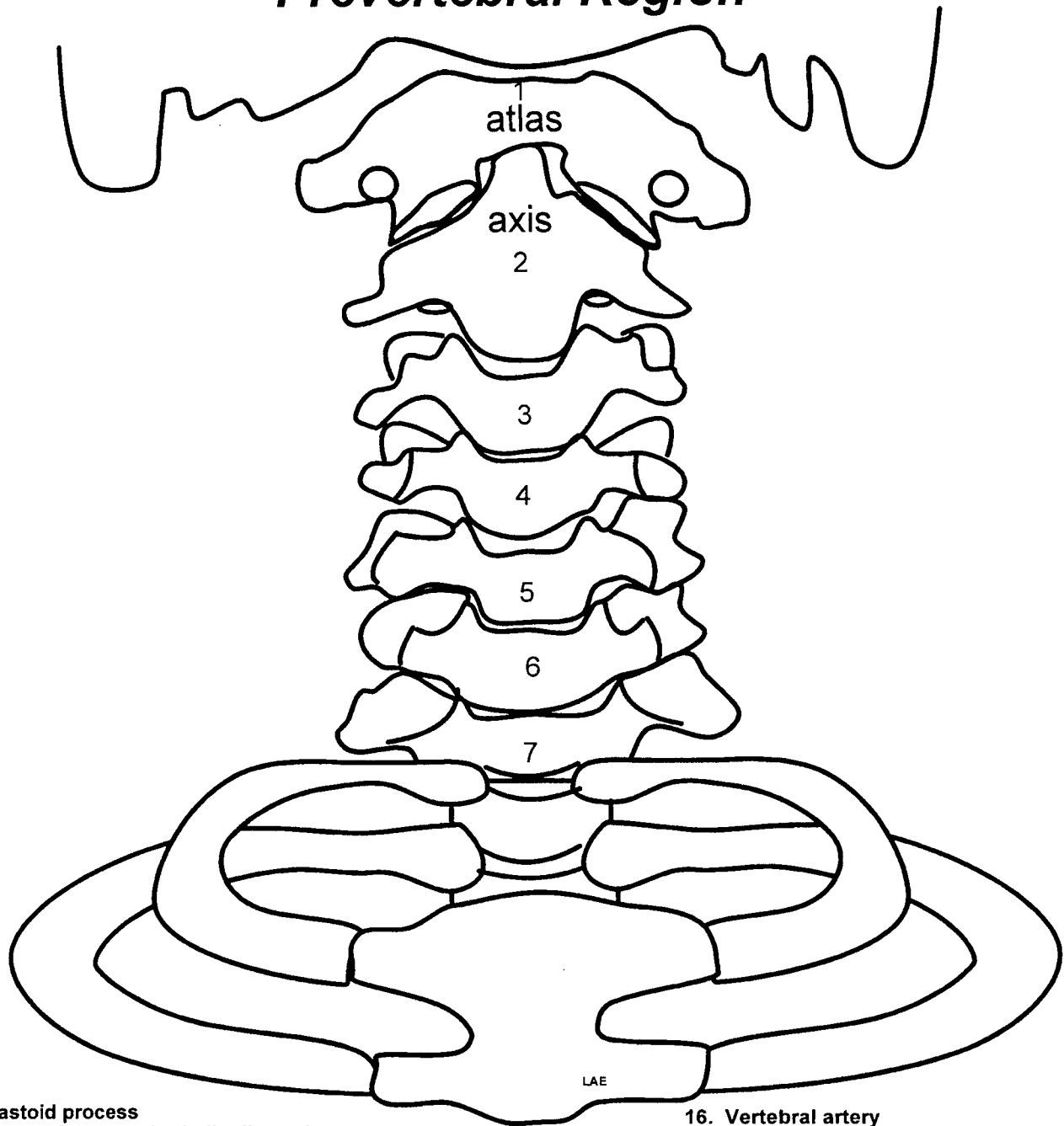


© Elsevier Ltd 2005. Standing: Gray's Anatomy 39e

Gray's 31.25. Vertebral Triangle



Prevertebral Region



1. Mastoid process
2. Groove for posterior belly digastric
3. Styloid process
4. Stylomastoid foramen
5. Facial nerve
6. Jugular foramen
7. Internal jugular vein
8. Glossopharyngeal nerve (CN IX)
9. Vagus nerve (CN X)
10. Spinal accessory nerve (CN XI)
11. Hypoglossal nerve (CNXII)
12. Longus colli muscle
13. Longus capitus muscle
14. Subclavian artery
15. Common carotid artery

16. Vertebral artery
17. Transverse foramen of atlas
18. Thyrocervical trunk
19. Inferior thyroid artery
20. Ascending cervical artery
21. Transverse cervical artery
22. Suprascapula artery
23. Thoracic sympathetic trunk
24. Stellate ganglion
25. Vertebral cervical sympathetic ganglion
26. Middle cervical sympathetic ganglion
27. Superior cervical sympathetic ganglion
28. Internal carotid artery
29. Internal carotid nerve and plexus
30. Ansa subclavia